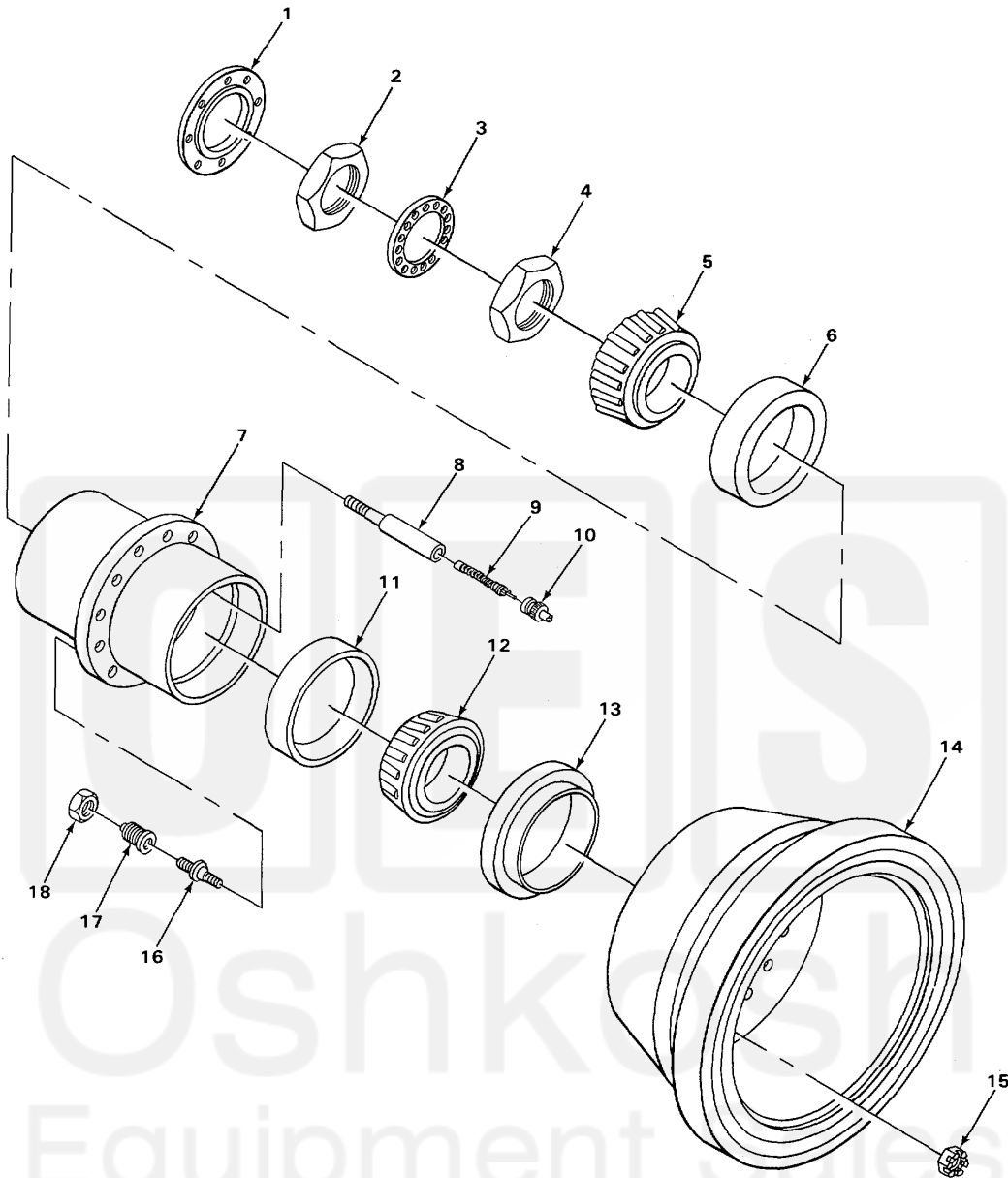


SECTION II



TA508619

FIGURE 58. WHEEL ASSEMBLY, DRIVE AXLE.

SECTION II				TM 10-3930-222-24P	
(1)	(2)	(3)	(4)	(5)	(6)
ITEM NO	SMR CODE	CAGEC	PART NUMBER	DESCRIPTION AND USABLE ON CODES (UOC)	QTY
GROUP 13 WHEELS AND TRACKS					
GROUP 1311 WHEEL ASSEMBLY					
FIG. 58 WHEEL ASSEMBLY DRIVE AXLE					
1	PAOZZ	30076	44539	SEAL, PLAIN ENCASED OIL, OUTER.....	2
2	PAOZZ	97286	1227T228	NUT, PLAIN, HEXAGON, BEARING .....	2
				ADJUSTING OUTER .....	
3	PAOZZ	78500	1229G121	WASHER, KEY ADJUSTING NUT .....	2
4	PAOZZ	97286	1227T332	NUT, PLAIN, HEXAGON BEARING .....	2
				ADJUSTING INNER.....	
5	PAOZZ	60038	39590	CONE AND ROLLERS WHEEL, OUTER.....	2
6	PAOZZ	60038	39520	CUP, TAPERED ROLLER WHEEL, OUTER.....	2
7	PAOZZ	30076	114824	HUB, WHEEL.....	2
8	PAOZZ	27763	7383	VALVE EXTENSION, TIR .....	4
9	PAOZZ	81348	TYV/CL2/TR C1	VALVE CORE .....	4
10	PAOZZ	51665	US48	CAP, PNEUMATIC VALVE .....	4
11	PAOZZ	53035	493	CUP, TAPERED ROLLER WHEEL, INNER .....	2
12	PAOZZ	60038	495AX	CONE AND ROLLERS, TA WHEEL, INNER.....	2
13	PAOZZ	93799	A12051574	SEAL, PLAIN, ENCASED INNER .....	2
14	PAOZZ	30076	216468	BRAKE DRUM BRAKE .....	2
				UOC:CGY, CJG, CJH, CJJ	
14	PAOZZ	30076	216468	BRAKE DRUM .....	2
				UOC:CGZ	
15	PAOZZ	96906	MS35692-62	NUT, PLAIN, SLOTTED H .....	12
16	PAOZZ	09386	13988	STUD, SHOULDERED WHEEL .....	12
17	PAOZZ	96906	MS53068-1	NUT, CAP, DUAL WHEEL .....	12
18	PAOZZ	96906	MS51983-4	NUT, SINGLE BALL.....	12

END OF FIGURE